

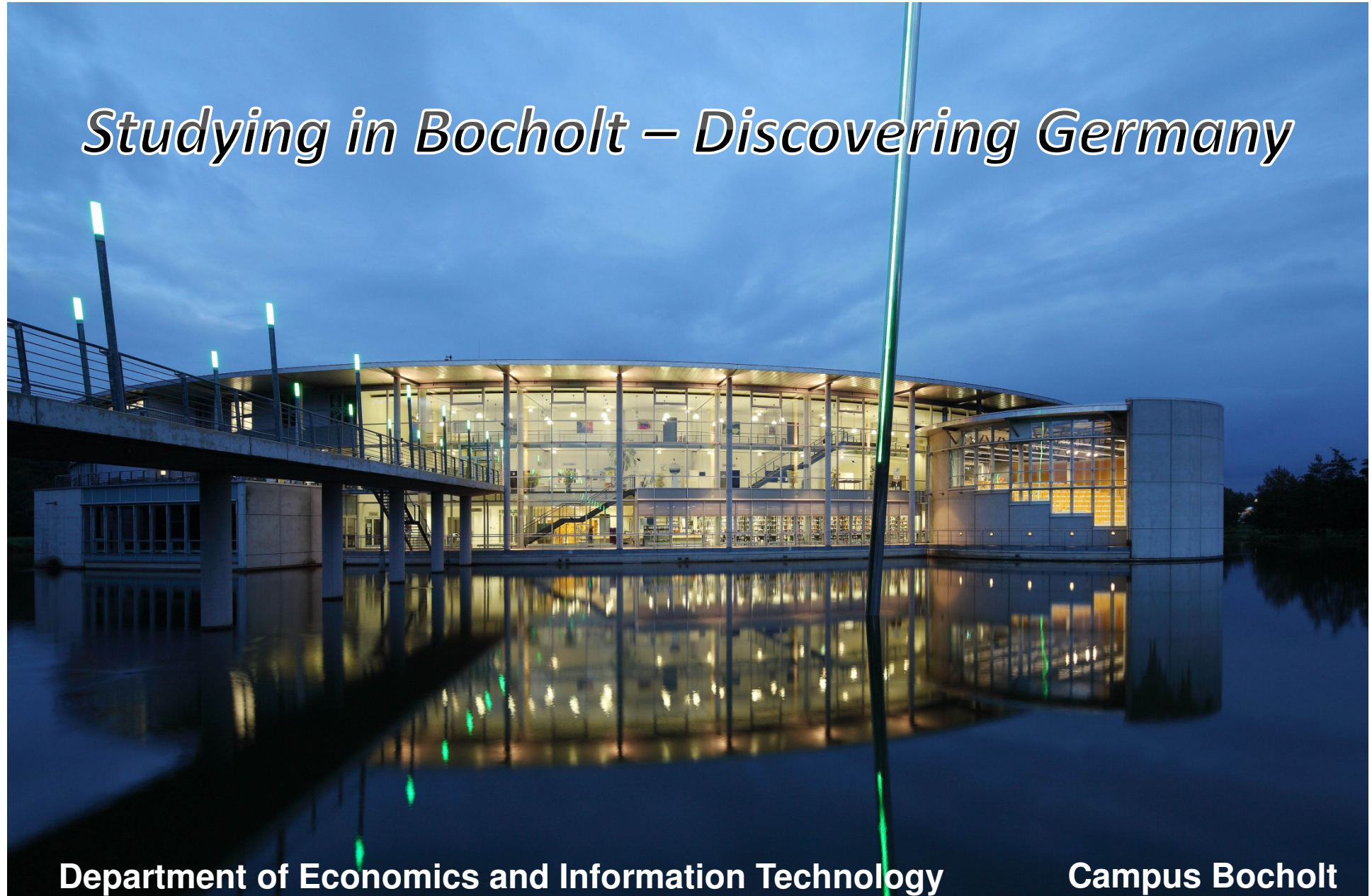


**Westfälische
Hochschule**

Gelsenkirchen Bocholt Recklinghausen

Wissen. Was **praktisch zählt.**

Studying in Bocholt – Discovering Germany

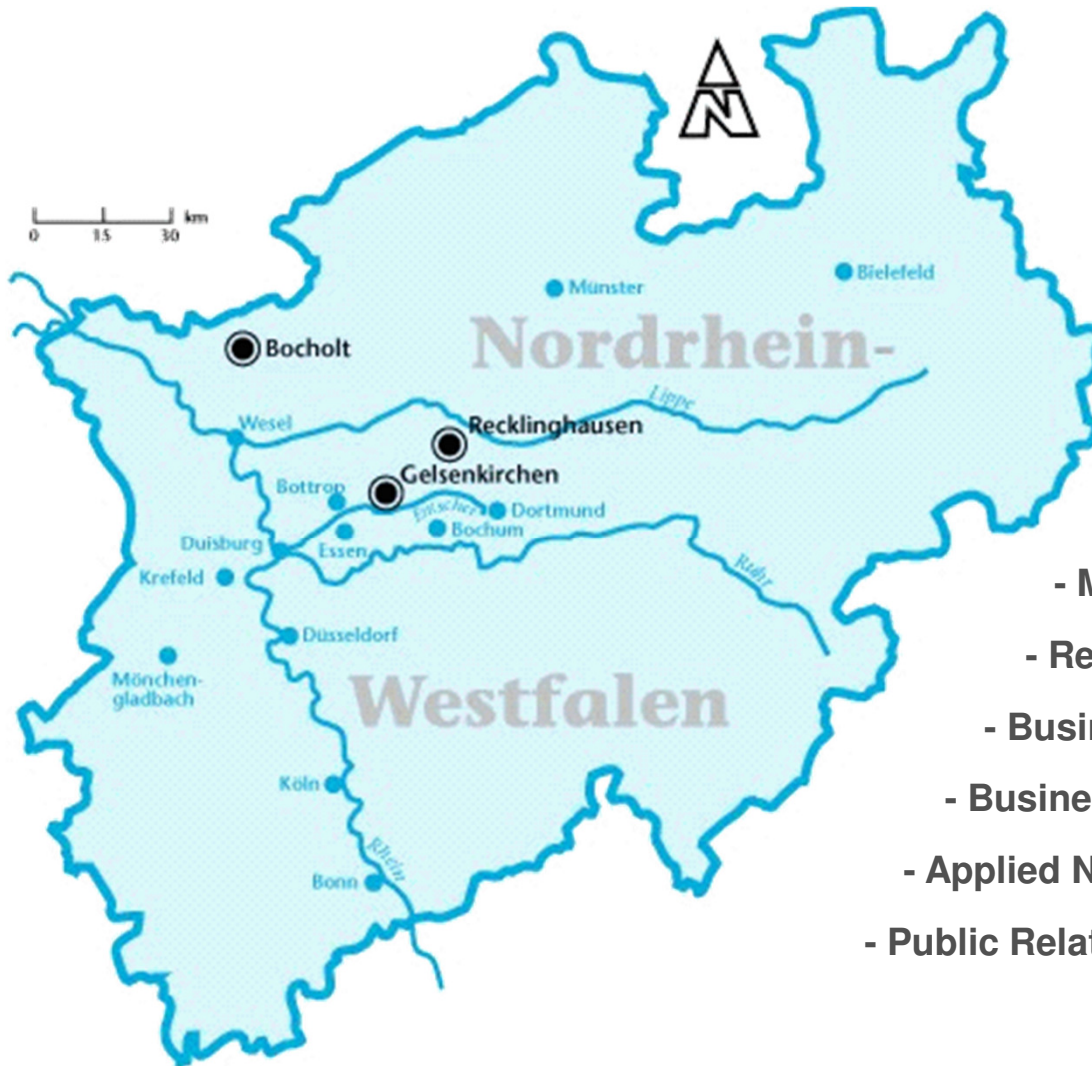


Department of Economics and Information Technology

Campus Bocholt



3 Campuses: Gelsenkirchen, Bocholt, Recklinghausen



- Mechanical Engineering
- Mechatronics
- Business Administration & Economics
- Electrical Engineering
- Information & Communication Technology
- Informatics
- Medical Technologies
- Recycling Technologies
- Business Law
- Business Engineering
- Applied Nature Sciences
- Public Relations & Journalism



**Westfälische
Hochschule**

Gelsenkirchen Bocholt Recklinghausen

Bocholt Campus



interdisciplinary

international

*practice
orientated*

- **Mechanical Engineering / Bionics**
(600 students)
- **Electrical Engineering**
(300 students)
- **Business Administration & Economics**
(650 students)



**Westfälische
Hochschule**

Gelsenkirchen Bocholt Recklinghausen

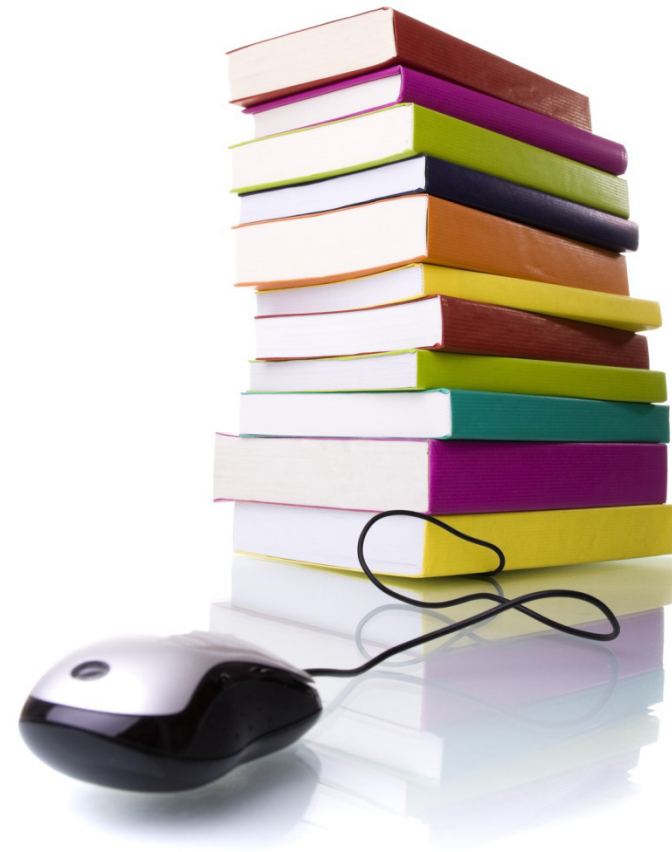
Business Studies at Bocholt campus

Mission statement

We educate junior management staff.

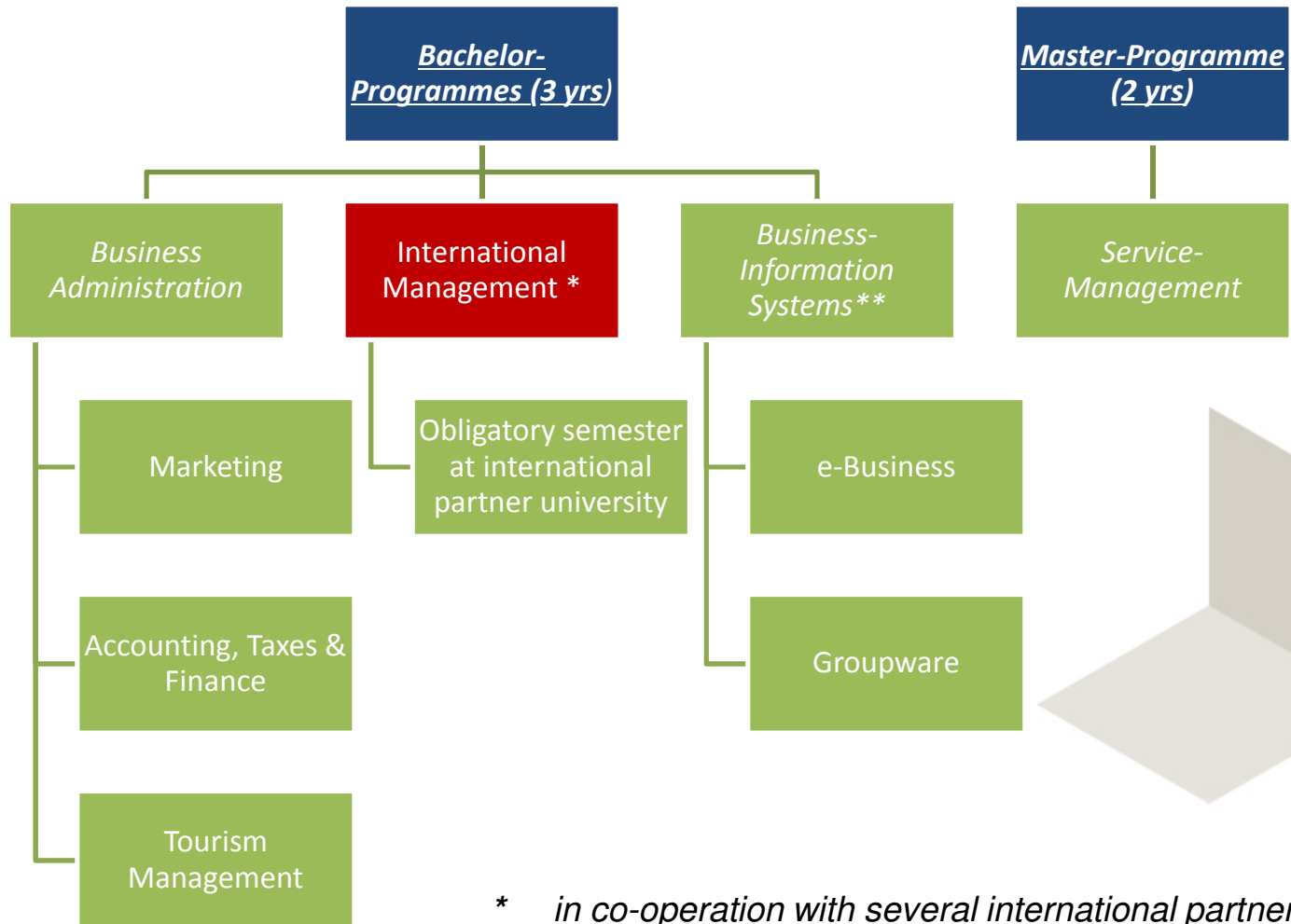
Our graduates should be able to...

- recognize market opportunities,**
- fix business decisions,**
- communicate and work in teams,**
- develop innovative solutions,**
- organize complex processes.**





Study Programmes



* in co-operation with several international partners

** in co-operation with the engineering departments in Bocholt



Curriculum “International Management” (BA)

Semester	Curriculum International Management (BA)											
6. Sem.	INTERNSHIP						THESIS					
	0		15				0		15			
5. Sem.	semester abroad											
4.Sem.	International Management		International Marketing		International Economics						German as a foreign language	
	6	10	4	6	6	9					4	5
3. Sem	HRM & Organiz. Development		Statistics				Basics in Business Law		Macro-Economics		Elect. Language I	
	4	7	6	8			4	5	4	5	4	5
2. Sem.	Finance & Investment		Business Informat.Systems		Cost Accounting		Working in an global environment		Micro- Economics		Business-English II	
	4	5	4	7	4	5	2	3	4	5	4	5
1. Sem.	Basics in BA & Marketing		Mathematics		External Accountin		Introduction and basic skills		Basics in Economics		Business-English I	
	6	8	6	8	4	5	2	2	2	2	4	5

Legende:

Module	
Weekl.hrs	credits

Instuctions in English



**Westfälische
Hochschule**

Gelsenkirchen Bocholt Recklinghausen

Wissen. Was **praktisch zählt.**

Why should I study in Bocholt?



**modern campus with
excellent facilities**



**modern campus with
excellent facilities**



good social life



**direct contact with
professors and tutors**



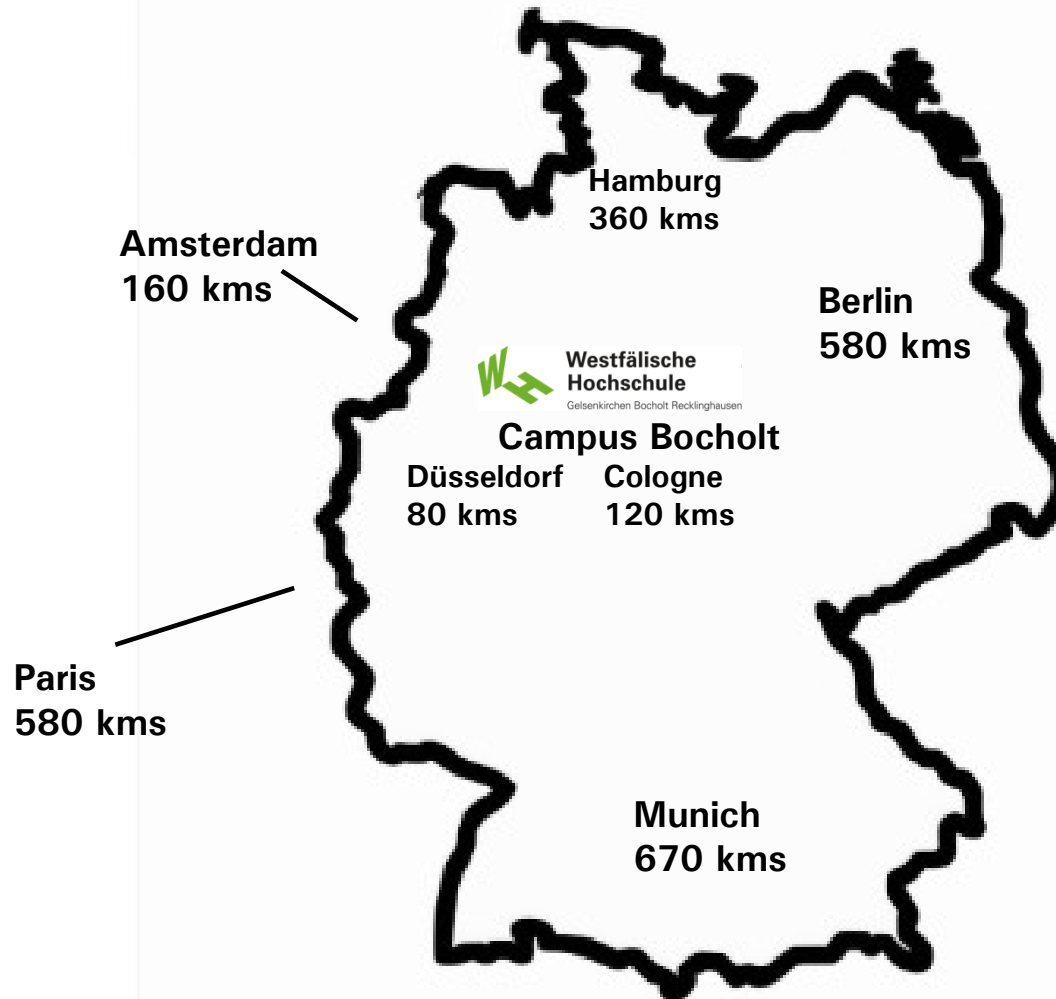
**great leisure
opportunities**



small classes



Bocholt – a Perfect Location to Discover Germany and Continental Europe





**Westfälische
Hochschule**

Gelsenkirchen Bocholt Recklinghausen

Apply now!

Deadline for summer semester 2017:

December 10th, 2016

For more information please contact:

international.bocholt@w-hs.de





**Westfälische
Hochschule**

Gelsenkirchen Bocholt Recklinghausen

Welcome to Bocholt!

